



Hard Chess Puzzle # 0131

By

G Bud Games
<https://gbud.in>

February 9, 2022

Contents

Hard Chess puzzle # 0131 - Mate in 2 moves	3
Hard chess puzzle 0131	3
Solution to hard chess puzzle 0131	4
Solution 1	4
Right moves for the solution to the hard chess puzzle 0131	6
Explanation for the moves	6
Categories of hard chess puzzle 0131	7
hard chess puzzle 0131 chart	7
How to view the solution to hard chess puzzle 0131	9
How to get help for moves in the hard chess puzzle 0131	10
Play chess for free	11

List of Figures

1	Solve this hard chess puzzle 0131. Mate in 2 moves @ https://gbud.in/gkycgw3	3
2	Solve this hard chess puzzle online with solution @ https://gbud.in/gkycgw3	3
3	Initial board position of hard chess puzzle 0131	4
4	Nc8	5
5	Rxc8	5
6	Qxc8#	6
7	hard chess puzzle 131 chart 1	7
8	hard chess puzzle 131 chart 2	8
9	hard chess puzzle 131 chart 3	8
10	hard chess puzzle 131 chart 4	9
11	Click the solution button to view solutions @ https://gbud.in/gkycgw3	9
12	Click the help button to get help on next move @ https://gbud.in/gkycgw3	10
13	Solve more hard puzzles @ https://gbud.in/chshdpz	10
14	Solve other puzzles @ https://gbud.in/chsgppz	10
15	Play chess online for free. Solve puzzles and play with friends	11
16	Solve this puzzle online by scanning this QR code or go to the link below	12

Hard Chess puzzle # 0131 - Mate in 2 moves

Solve this hard chess puzzle and improve your chess games through improvement of your chess strategies and chess tactics. This hard puzzle is a subset of [kids games](#).

Puzzle No : 0131

Difficulty level : hard

Description : Mate in 2 moves

Next Move : White

Player level : Advanced

Short URL for puzzle : <https://gbud.in/gkycgw3>

Hard chess puzzle 0131

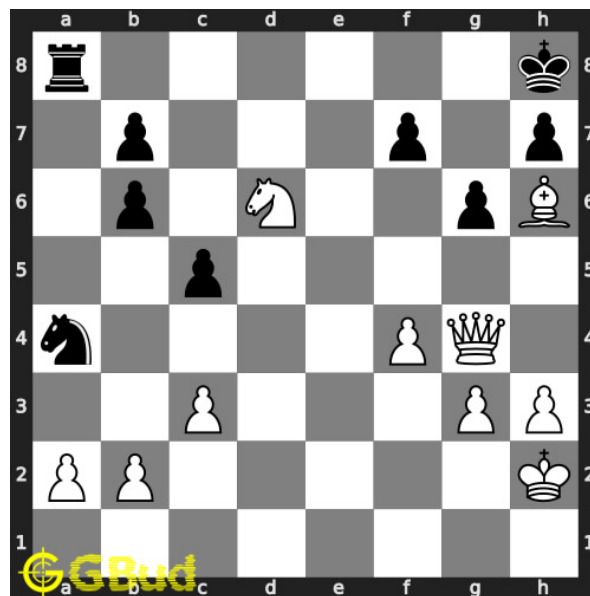


Figure 1: Solve this hard chess puzzle 0131. Mate in 2 moves @ <https://gbud.in/gkycgw3>



Figure 2: Solve this hard chess puzzle online with solution @ <https://gbud.in/gkycgw3>

Dont forget to check out [chess puzzles](#), [easy chess puzzles](#), [medium chess puzzles](#), [hard chess puzzles](#) and [chess puzzles collections](#) .

Solution to hard chess puzzle 0131

At this puzzle, next [move](#) is by [White](#). The objective of the puzzle is to mate in 2 moves.

See the interactive solution at the [puzzle page](#)

Solution 1

Initial board position This is the initial board position of hard chess puzzle 0131.

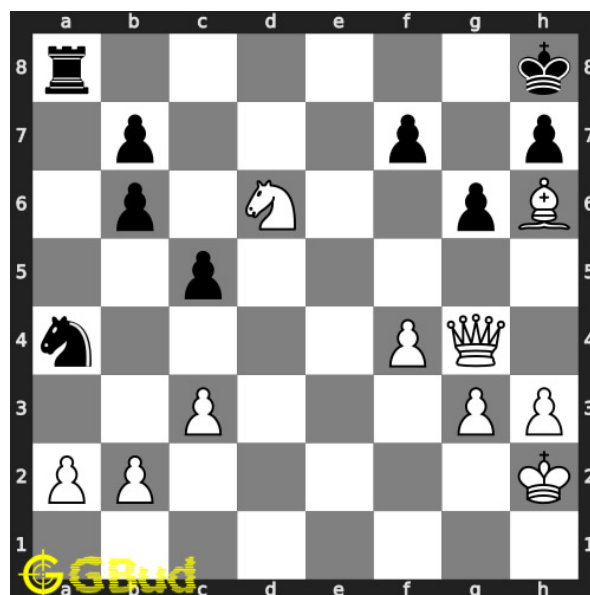


Figure 3: Initial board position of hard chess puzzle 0131

Move 1 Move by white

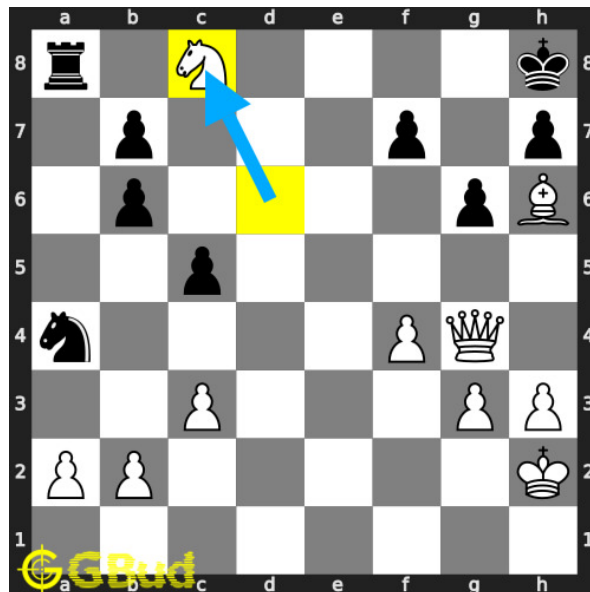


Figure 4: Nc8

this sacrifice is to block the opponent's rook which is guarding eighth rank.

Move 2 Move by black

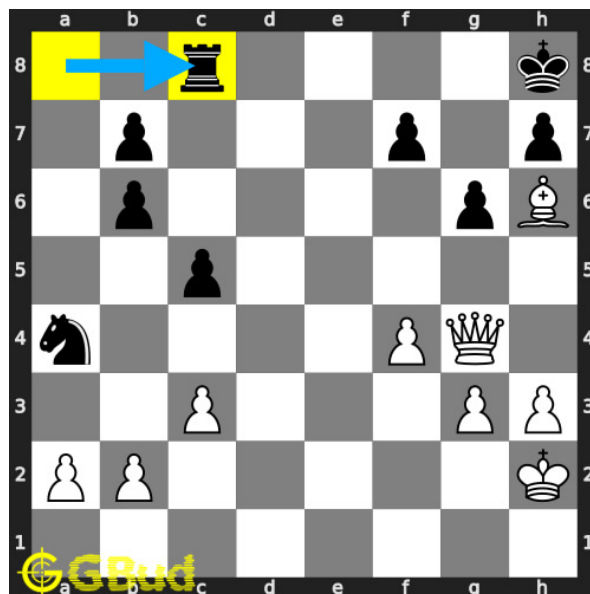


Figure 5: Rxc8

opponent's rook captures your knight.

Move 3 Move by white

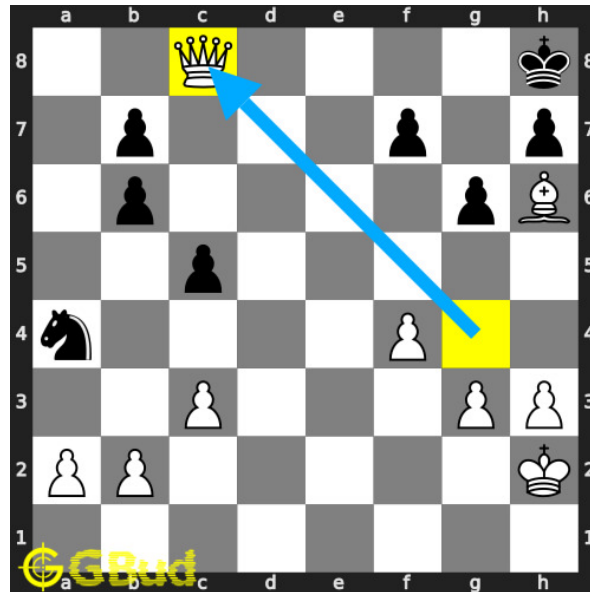


Figure 6: Qxc8#

your **queen captures** opponent's hanging **rook** and **checkmate**. opponent's **king** can't **move** due to the additional attack from your **bishop** and the block by their friendly **pawn**. this is how you can **mate** in 2 **moves**.

Right moves for the solution to the hard chess puzzle 0131

Based on the objective of the puzzle, you have to make the right moves. Following are the right moves

1. Nc8, Qxc8#

Explanation for the moves

1. Nc8 - This sacrifice is to block the opponent's rook which is guarding eighth rank.
2. Rxc8 - Opponent's rook captures your knight.
3. Qxc8# - Your queen captures opponent's hanging rook and checkmate. Opponent's king can't move due to the additional attack from your bishop and the block by their friendly pawn. This is how you can mate in 2 moves.
4. For right move - Your wise moves ends in a checkmate. Keep it up
5. For wrong move - It seems you failed to recognize the sacrifice of knight. Try again

Categories of hard chess puzzle 0131

This hard chess puzzle falls in these categories.

1. [Hard chess puzzles](#)
2. [Sacrifice puzzles in chess](#)
3. [Mate in 2 puzzles in chess](#)
4. [Endgame puzzles in chess](#)
5. [Strategy puzzles in chess](#)
6. [Queen puzzles in chess](#)
7. [Knight puzzles in chess](#)

hard chess puzzle 0131 chart



Figure 7: hard chess puzzle 131 chart 1



Figure 8: hard chess puzzle 131 chart 2



Figure 9: hard chess puzzle 131 chart 3

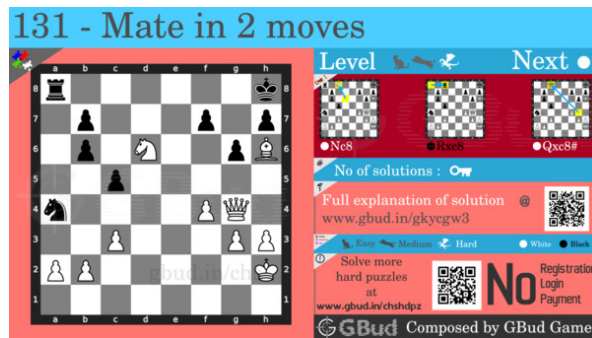


Figure 10: hard chess puzzle 131 chart 4

How to view the solution to hard chess puzzle 0131

To view the [solution to this puzzle](#), follow the steps given below

1. Go to the [puzzle page](#)
2. Click the solution button (Key as shown [below](#)) to view the solution



Figure 11: Click the solution button to view solutions @ <https://gbud.in/gkycgw3>

How to get help for moves in the hard chess puzzle 0131

To get help or the possible next moves in the puzzle, , follow the steps given below

1. Go to the [puzzle page](#)
2. Click the help button (exclamation mark as shown [below](#)) to get help or suggestion on next possible [move](#)



Figure 12: Click the help button to get help on next move @ <https://gbud.in/gkycgw3>



Figure 13: Solve more hard puzzles @ <https://gbud.in/chshdpz>



Figure 14: Solve other puzzles @ <https://gbud.in/chsgppz>

Play chess for free

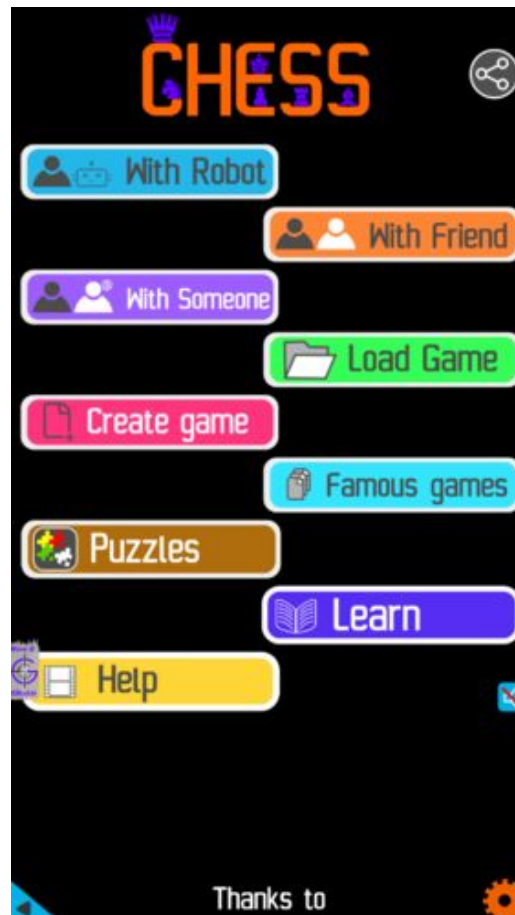


Figure 15: Play chess online for free. Solve puzzles and play with friends

Play chess for free at <https://gbud.in/chs>

We present you a platform to play chess online with friends for free. No need to install any app. You can play chess for free without registration or login.

Simple. You can do several chess related activities.

1. solve chess puzzles
2. learn about chess
3. play chess with computer
4. play chess with friend
5. create your own chess games

6. [fen viewer](#)
7. [fen editor](#)
8. [fen generator](#)
9. [pgn viewer](#)
10. [chess board editor](#)
11. [view famous chess games.](#)



Figure 16: Solve this puzzle online by scanning this QR code or go to the link below

<https://gbud.in/gkycgw3>

Read the latest article on Hard Chess puzzle # 0131 - Mate in 2 moves by scanning this QR code or click the link

Previous article : « [Hard Chess puzzle # 0130 - Mate in 3 moves](#)

Next article : [Hard Chess puzzle # 0132 - Mate in 3 moves](#) »

[Back to top](#)

[Contact Us](#)